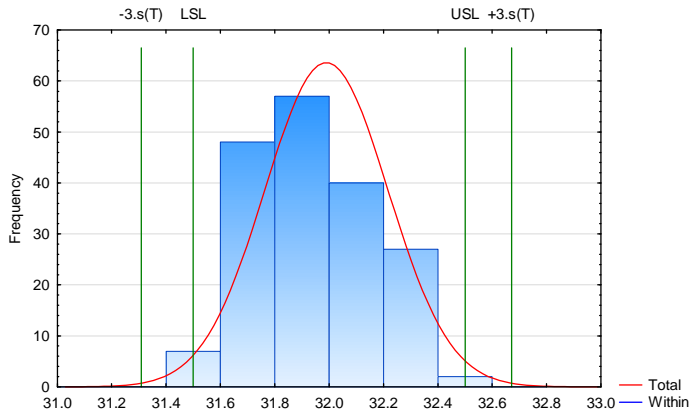
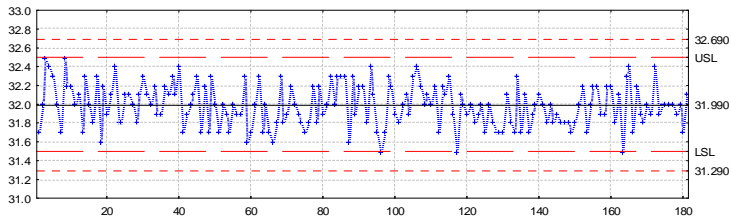


Variable: Etil-acetát tartalom, m/m% Mean: 31.9901
 Sigma (Total):0.22708 Sigma (Within):0.00000
 Specifications: LSL=31.5000 Nominal=---- USL=32.5000
 Normal: Cp=.7339 Cpk=.7193 Cpl=.7193 Cpu=.7485
 Exclude cases: 1:2

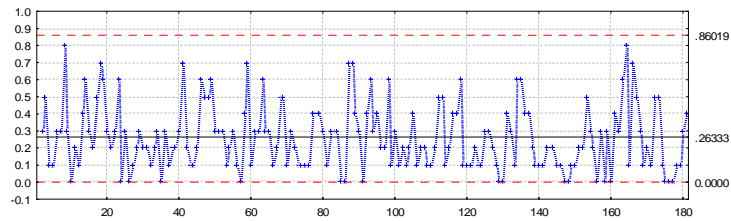


X and Moving R Chart; variable: Etil-acetát tartalom, m/m%
 LSL=31.5, USL=32.5

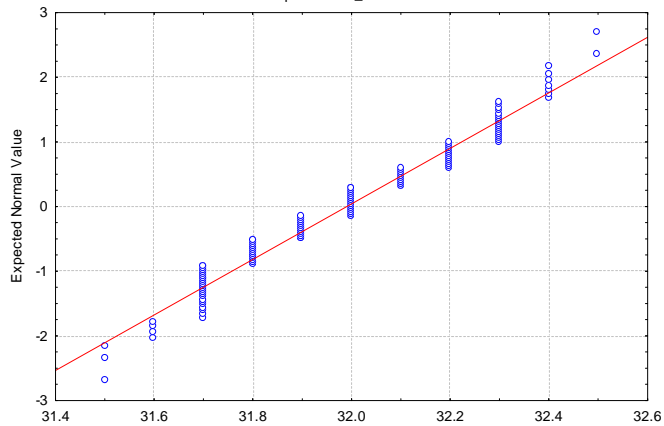
X: 31.990 (31.990); Sigma: .23337 (.23337); n: 1.



Moving R: .26333 (.26333); Sigma: .19895 (.19895); n: 1.

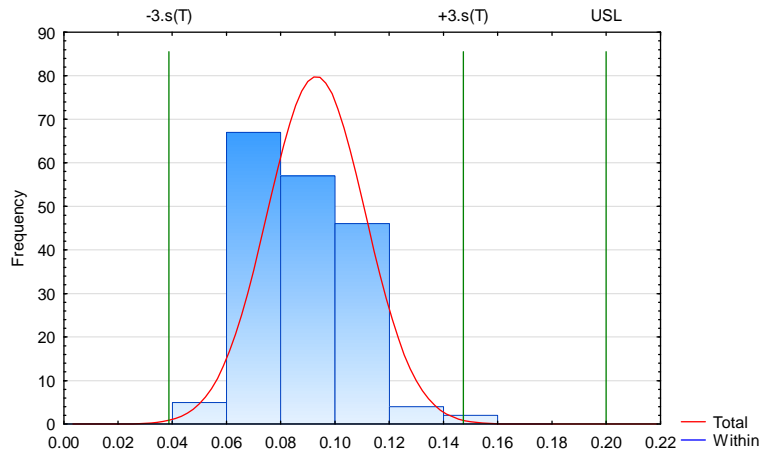


Normal Probability Plot of Etil-acetát tartalom, m/m%
 Eluens Drosiprenonhoz_ve.sta 10v*183c

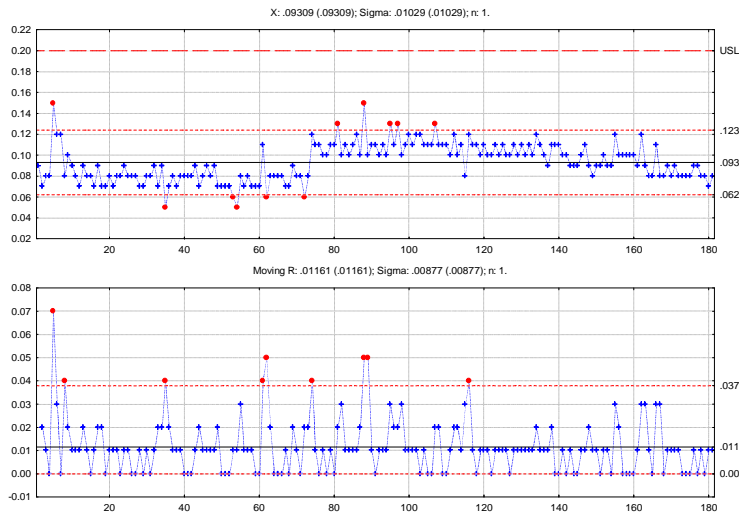


Etil-acetát tartalom, m/m%: SW-W = 0.9649, p = 0.0002

Variable: Viztartalom, % Mean: .093094
 Sigma (Total):0.01808 Sigma (Within):0.00000
 Specifications: Nominal= --- USL=:200000
 Normal: Cpk=1.971 Cpu=1.971
 Exclude cases: 1:2



X and Moving R Chart; variable: Viztartalom, %
 USL=0.2



Normal Probability Plot of Viztartalom, %
 Eluens Drosiprenonhoz_ve.sta 10v*183c

